



BRETFORD MFG. CO.



ETL LISTED
MODEL #TL357LL/C
120V 60Hz 6A

3102113
CONFORMS TO UL STD 60950

031-8558

TL357LL/C
PowerSync Cart
QUICK START GUIDE

Welcome

Congratulations on purchasing your new PowerSync Cart!

This Quick Start Guide is intended to guide you through the initial setup and basic use of the Bretford PowerSync Cart. Additional information available at :

www.bretford.com/apple

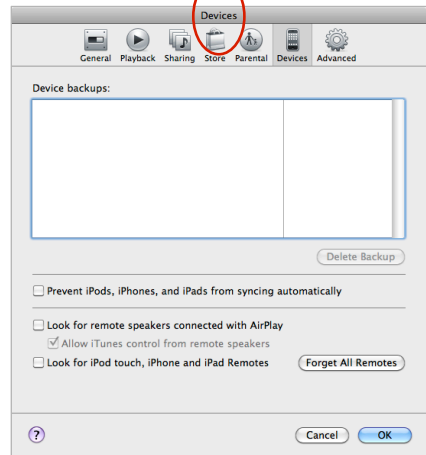
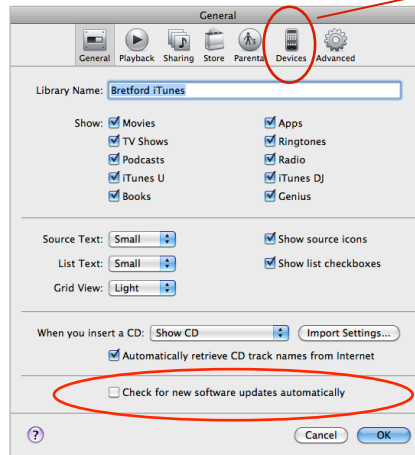
Using PowerSync Cart

The PowerSync Cart enables you to take music, videos, podcasts, photos and other content files in your iTunes library on your Mac and sync your selected content across 20 iPod Players at a time.

Getting Started ...

Step 1 Configure iTunes for use with PowerSync Cart

By default, iTunes will automatically check for new software updates, including available updates for iTunes & any attached iPods. This feature, however, can often interfere with syncing multiple iPods. To prevent iTunes from automatically checking for updates, Choose "Preferences..." from the iTunes menu, and on the "General" pane, **deselect** "Check for new software updates automatically". Also, open "Devices" from this "General" pane, and be sure no boxes are checked, nor are there any listings under "Device backups".



Step 2 Configure each Pod for use with the PowerSync Case



ATTENTION: The PowerSync Cart is compatible with iPod touch, iPod classic, and iPod nano. For optimal performance, you must set-up your iPod players using the configuration on pages 3, 4 or 5 of this Quick Start Guide.

for iPod touch page 3

for iPod classic page 4

for iPod nano page 5





Step 3 Sync iPod players using the PowerSync Cart

1. Once you have created the content & organized your playlists within iTunes, and set-up each individual iPod player per the instructions on pages 3, 4 or 5, please start with the following configuration:
 - Each iPod Player is connected inside the drawer
 - Mac is "ON" with no applications running
 - PowerSync Cart is plugged into wall and Switch is in "OFF" position.
2. Connect the USB Cable for the selected drawer to your Mac
Note: USB 2.0 port on your Mac is recommended
3. Turn main Power Switch on back of cart to "ON" position.
4. **Open a new finder Window & wait until your Mac shows each iPod Player**
Note: This may take a few moments to complete.
5. Launch iTunes
Note: Each iPod Player will automatically appear in iTunes & begin syncing.
The spinning wheel to the right of each iPod Player indicates that syncing is in progress.
Sync is complete when spinning wheel disappears.
6. Once the Sync Process is complete, eject each iPod Player or simply close iTunes to eject all at once.



Step 4 Store & Charge iPod Players in the PowerSync Cart

1
Open the PowerSync Cart

2
Insert each iPod Player into a foam compartment and attach the dock connector cable.

NOTE: The orange Bretford logo should face up on same side as iPod Player screen.



3
Plug in Power Cord on the back of the cart

4

Turn red power switch on side of cart to On.

NOTE: PowerSync Cart will charge up to 20 iPod Players at once (one drawer)

NOTE: For best results with new iPod Players, let them charge for about four hours or until the iPod Player displays a charged battery.

CAUTION:



Operating Temperature should equal or be under 40°C or 104°F

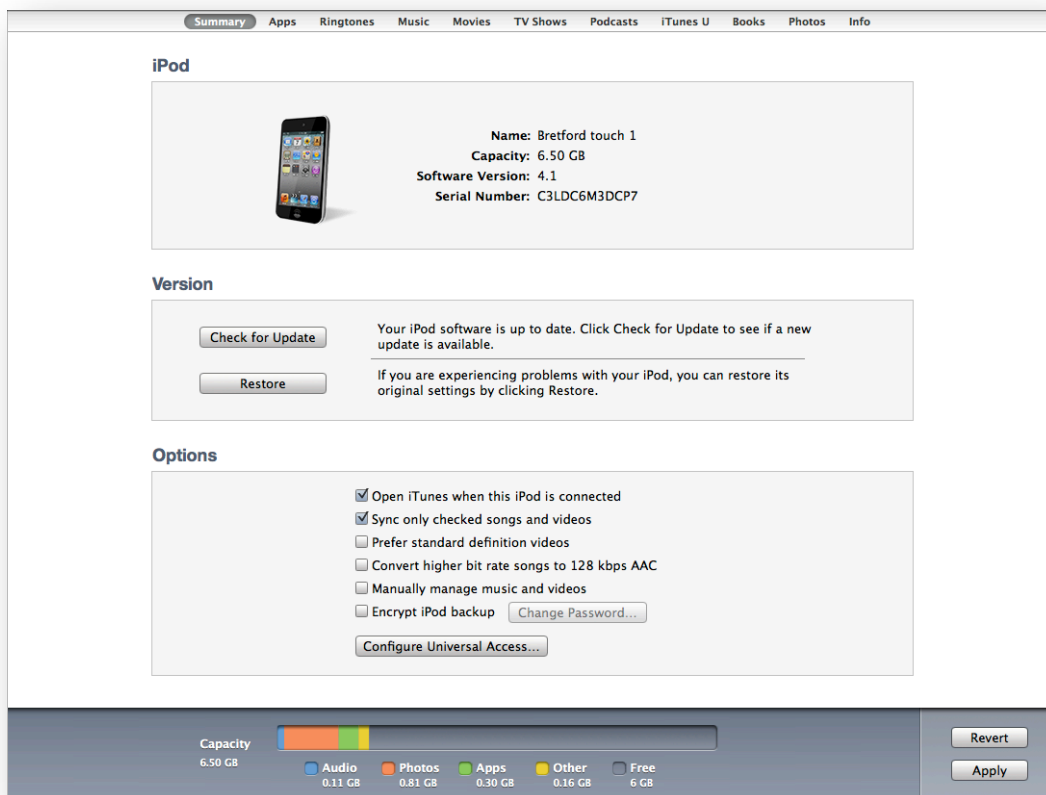
PowerSync Cart should only be used indoors

User can only connect 20 iPod players at one time

Input Power Cord must meet these specifications: A certified power supply cord must be used with this equipment. The relevant national installation and/or equipment regulations shall be considered. A certified power supply cord not lighter than ordinary polyvinyl chloride flexible cord according to IEC 60227 (designation H03 VV-F) shall be used. Alternatively, a flexible cord of synthetic rubber according to IEC 60245 (designation H05 RR-F) shall be used. The power cord set shall have a power supply cord with conductors providing a cross-sectional area of 3G, 1.00mm² minimum, and shall have an IEC plug.



Configuring an iPod touch for use with PowerSync Cart



This document describes the proper settings to be set in iTunes in order to get the best experience with your iPod touch units, when used with the Bretford PowerSync Cart.

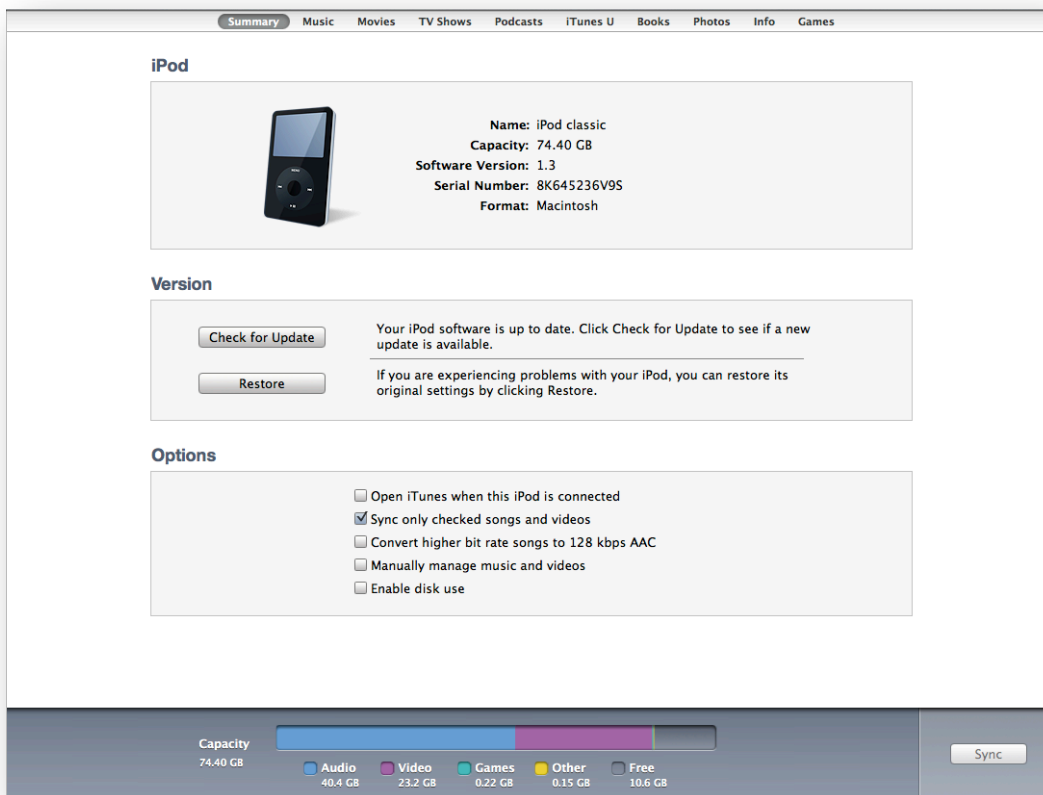
Please follow these instructions for each iPod touch you will be using with your PowerSync Cart.

1. Connect each iPod, one at a time, to the Mac you will be using with the PowerSync Cart.
2. If iTunes does not open automatically, open iTunes, and select your iPod touch.
3. If prompted, complete the naming and registration process.
4. Select the Summary tab for your iPod touch.
5. In the Options section:
 - a. Enable "Open iTunes when this iPod is attached" (This not only activates iTunes, but begins the syncing process.)
 - b. Enable "Sync only checked songs and videos" (This allows for greater control of synced media.)
 - c. Disable "Manually manage music and videos"
(Enabling this will require that you manually drag media to this particular iPod.)
4. In the remaining tabs, select the media and playlists you wish to sync with this iPod touch.
5. Click the Sync or Apply button.
(The Sync button changes to Apply and Cancel buttons when you make a change to the sync settings.)

Repeat these steps with each iPod touch in your collection.



Configuring an iPod classic for use with PowerSync Cart



This document describes the proper settings to be set in iTunes in order to get the best experience with your iPod classic units, when used with the Bretford PowerSync Cart

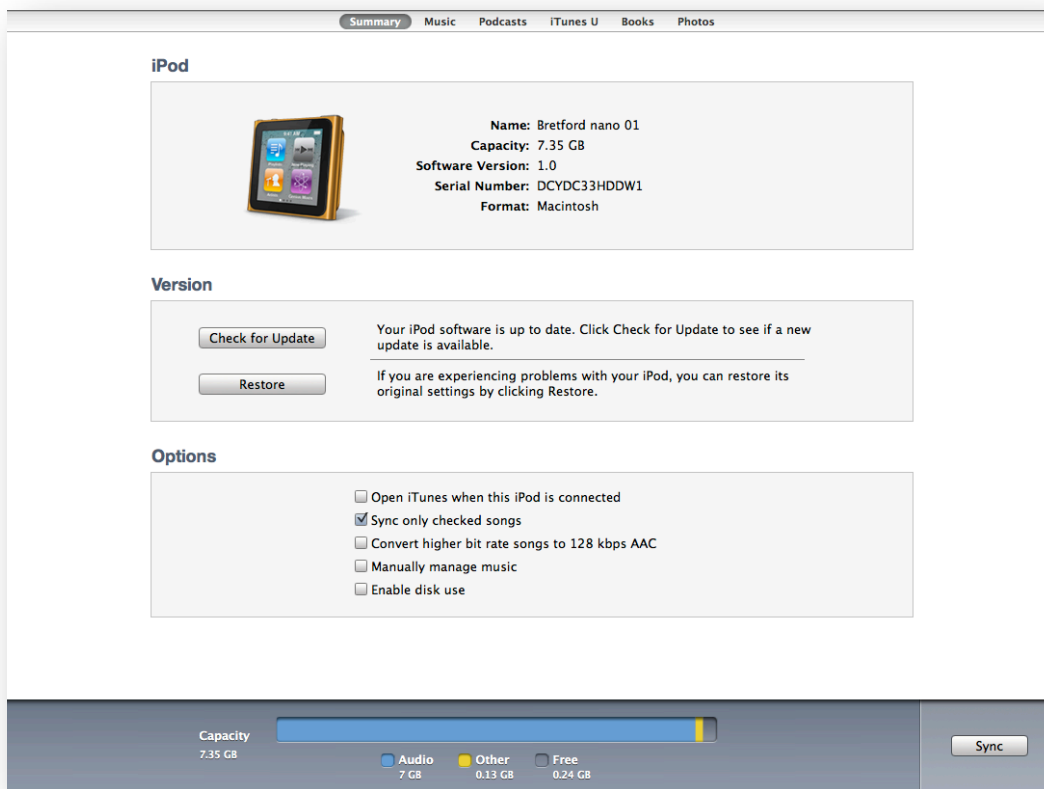
Please follow these instructions for each iPod classic you'll be using with your PowerSync Cart.

1. Connect each iPod, one at a time, to the Mac you will be using with the PowerSync Cart.
2. If iTunes does not open automatically, open iTunes, and select your iPod classic.
3. If prompted, complete the naming and registration process.
4. Select the Summary tab for your iPod classic.
5. In the Options section:
 - a. Disable "Open iTunes when this iPod is attached"
 - b. Enable "Sync only checked songs and videos" (This allows for greater control of synced media.)
 - c. Disable "Manually manage music and videos"
(Enabling this will require that you manually drag media to this particular iPod.)
 - d. Disable "Enable disk use"
5. In the remaining tabs, select the media and playlists you wish to sync with this iPod classic.
6. Click the Sync or Apply button.
(The Sync button changes to Apply and Cancel buttons when you make a change to the sync settings.)

Repeat these steps with each iPod classic in your collection.



Configuring an iPod nano for use with PowerSync Cart



This document describes the proper settings to be set in iTunes in order to get the best experience with your iPod nano units, when used with the Bretford PowerSync Cart.

Please follow these instructions for each iPod classic you'll be using with your PowerSync Cart.

1. Connect each iPod, one at a time, to the Mac you will be using with the PowerSync Cart.
2. If iTunes does not open automatically, open iTunes, and select your iPod nano.
3. If prompted, complete the naming and registration process.
4. Select the Summary tab for your iPod nano.
5. In the Options section:
 - a. Disable "Open iTunes when this iPod is attached"
 - b. Enable "Sync only checked songs and videos" (This allows for greater control of synced media.)
 - c. Disable "Manually manage music and videos"
(Enabling this will require that you manually drag media to this particular iPod.)
 - d. Disable "Enable disk use."
 - e. Enable or Disable "Enable spoken menus for accessibility" as you see fit.
6. In the remaining tabs, select the media and playlists you wish to sync with this iPod nano.
7. Click the Sync or Apply button.
(The Sync button changes to Apply and Cancel buttons when you make a change to the sync settings.)

Repeat these steps with each iPod nano in your collection.



PowerSync Cart Operations

Pull-Out shelf for host MacBook Computer has modular pattern for attaching the USB Cables from the two iPod Drawers, one for each drawer. Simply plug in the USB Cable for the drawer you wish to sync. Detail shows the MacBook transformer plugged into the power strip right at the same level as the computer for easy access in and out.



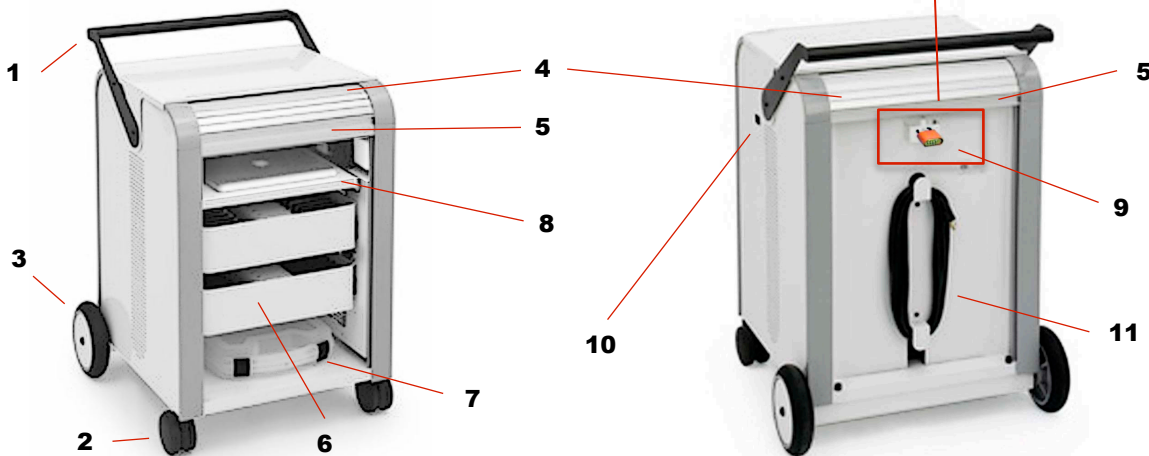
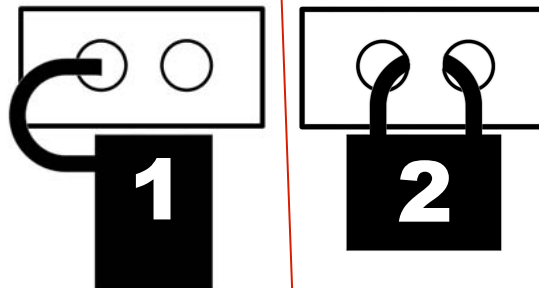
Setting the Combination Locks

Your new PowerSync Cart comes equipped with two re-settable Combination Padlocks – one for the back of the cart and one for the Dock & Lock Security Plate. You can program them with the same combination or different combinations ... The choice is yours. Each lock starts with 0-0-0-0. Follow the directions with the lock for changing the combination. Remember to depress the shackle before un-engaging it from the lock.



Positive Static Lock Assembly

The Locking system on your PowerSync Cart consists of a steel stopper channel welded directly to the cart chassis. This channel has two holes for the hasp of the Combination Lock to pass through. Once the Lock is engaged, the lock itself prohibits the tambour door from sliding down. Use this illustration to engage the lock with the steel stopper channel.



Parts Listing for PowerSync Cart Model TL357LL/C

- 1 Handle
- 2 Front 4" Casters with Locking Brakes
- 3 Rear 8" Soft Rubber Casters
- 4 Tambour Door
- 5 Tambour Door Handle
- 6 PowerSync iPod Drawers (2 Drawers) with 2 Foam Inserts each Drawer (4 Inserts total) Capacity = 20 iPod Players each Drawer
- 7 iPod Accessory Storage Tubs (1 Tub)
- 8 Host Computer Pull-Out Shelf
- 9 Positive Static Lock Assembly

- 10 Power Control On/Off Switch
- 11 Power Cord Winder

Hardware & Product Documentation (items not shown)

- 12 Dock Connector Cables, Pre-Installed in Drawers 40 Cables Total, 20 each Drawer
- 13 User Programmable Combination Locks, 2 each
- 14 Dock and Lock Wall Bracket
- 15 Dock and Lock Hardware Pack
- 16 Dock and Lock Security Cable, 3 Feet Long
- 17 Security Screw Wrench
- 18 Hex Head Wrench
- 19 Quick Start Guide

WARRANTY

Cart Twelve (12) years from date of shipment

Electrical Assemblies/Components One (1) year from date of shipment

Bretford engineers and manufactures its products to provide dependable operation. Therefore, Bretford Manufacturing, Inc. warrants that all products it manufactures are at date of shipment free from defects in material or workmanship. Any product which under normal use fails to function within the time periods specified below and found defective in material or workmanship by the Company's inspection will be repaired or replaced without charge to the buyer or, at the election of Bretford Manufacturing, Inc., a credit will be allowed up to the invoice purchase price of the product.

This warranty is inapplicable where, in the judgment of Bretford Manufacturing, Inc., the defect is attributable to normal wear, misapplication, abnormal use, misuse, modification or damage after shipment, including damage caused by the buyers failure to properly maintain, or other similar cause.

THIS WARRANTY IS EXPRESSLY IN LIEU OF ANY OTHER EXPRESSED OR IMPLIED WARRANTIES, INCLUDING ANY ORDINARY OR PARTICULAR PURPOSE. THERE ARE NO WARRANTIES WHICH EXTEND BEYOND THE DESCRIPTION ON THE FACE HEREOF.